

HOFMANN®



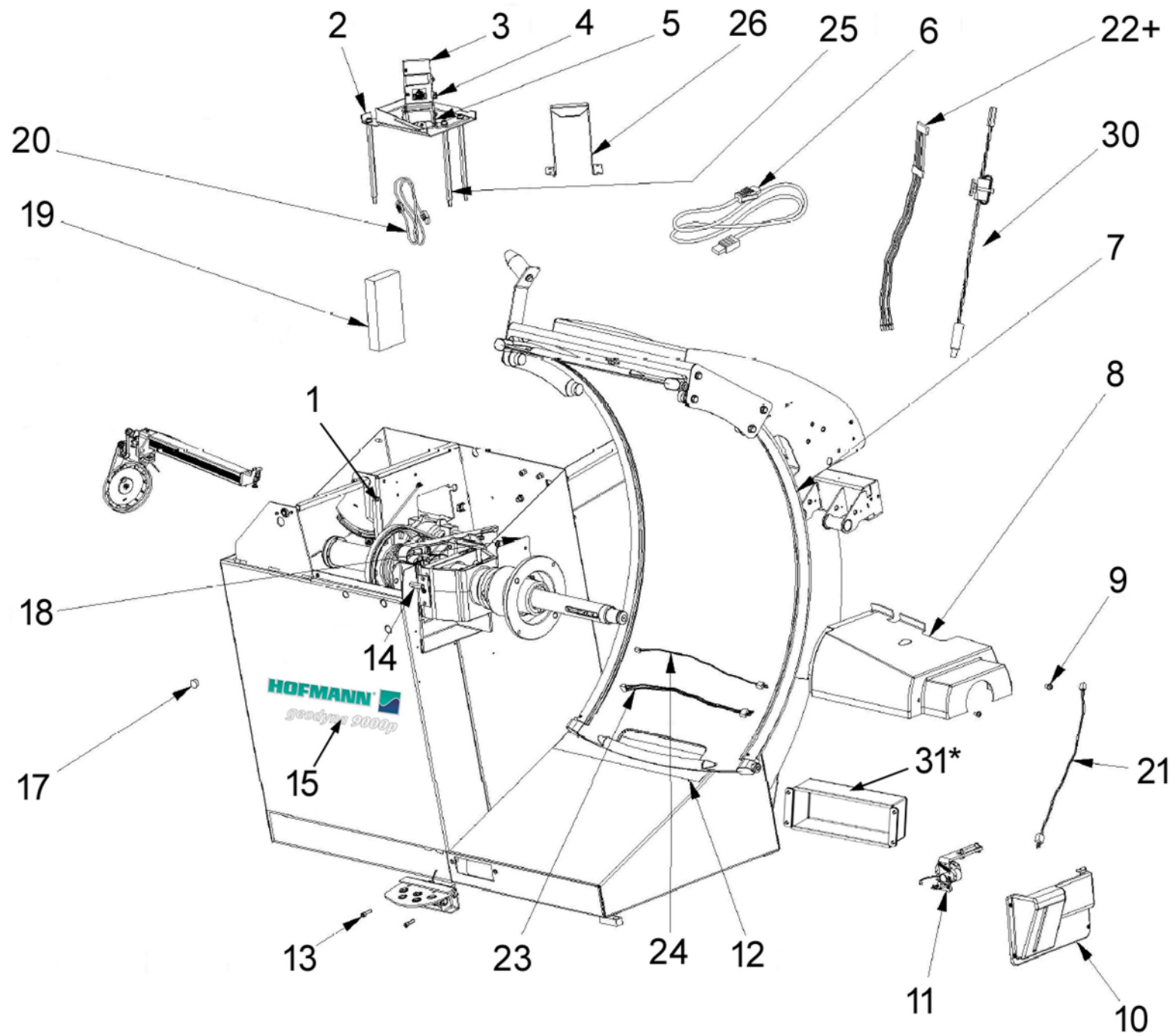
geodyna 9000p

Spare Parts List

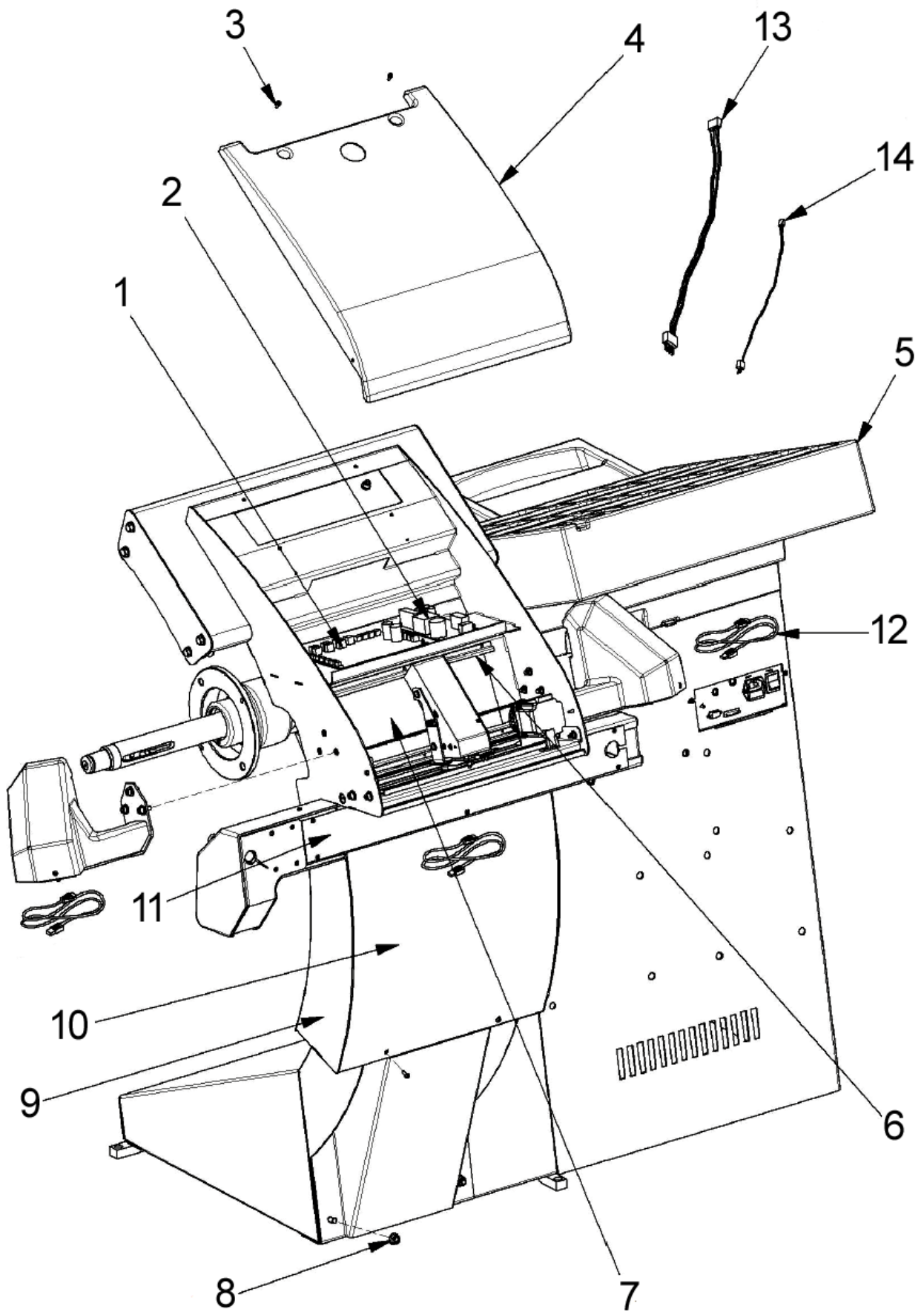


BOM EEWB771AP230 Geodyna 9000p

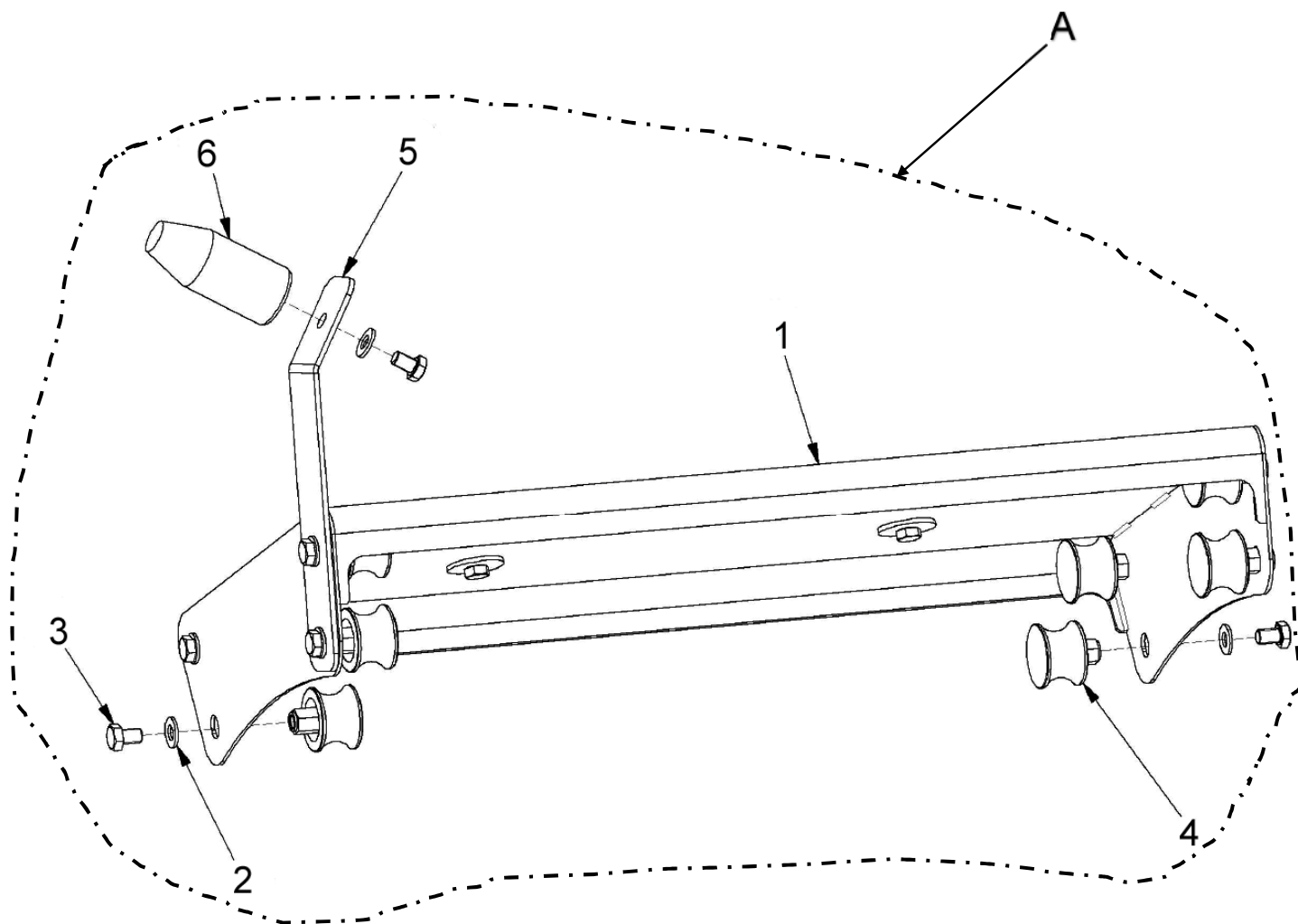
Part Number	Quantity	Description
EAA0423J32A	1	Assy Geodyna 9000P 230V
ZEEWB771AU9	1	Technical Doc. Geo 9000P
EAK0309J30A	1	Monitor 19" Touch Screen UI
EAX0039J01A	1	Cord-Power 230V
00089209000	1	Cord-Power Adapter 12
EAA0283D11A	1	Clamping Device For Power Clamp
3-02615A	1	USB Drive
3-09906B	1	Printer - Inkjet Hp3755
6-02422B6	1	USB Cable for Printer
EAL0442G76A	1	Geodyna 9000P Product Label
EAL0341J63A	1	Label-Patent
EAL0341J56A	1	Label-Laser
EAL0341J57A	1	Label –Caution, Wheelguard Movement
EAL0420J33A	1	Label - Caution Max Diam And Weight
EAL0341J70A	1	Label – Laser Aperature
EAL0341J71A	1	Label – Cfr Certification
EAL0341J96A	1	Label – Balancer Warning, Rear
EAL0341J97A	1	Label – Balancer Warning, Side
EAL0343J76B	1	Label-Electrical/Serial - Bal And Tc
5403	1	Form-lwr
EAL0349G87A	1	Label-Wheel #1
EAL0349G88A	1	Label-Wheel #2
EAL0349G89A	1	Label-Wheel #3
EAL0349G90A	1	Label-Wheel #4
EAL0349G91A	1	Label-Wheel #5
EAL0412G63A	3	Label - 2M Class Laser



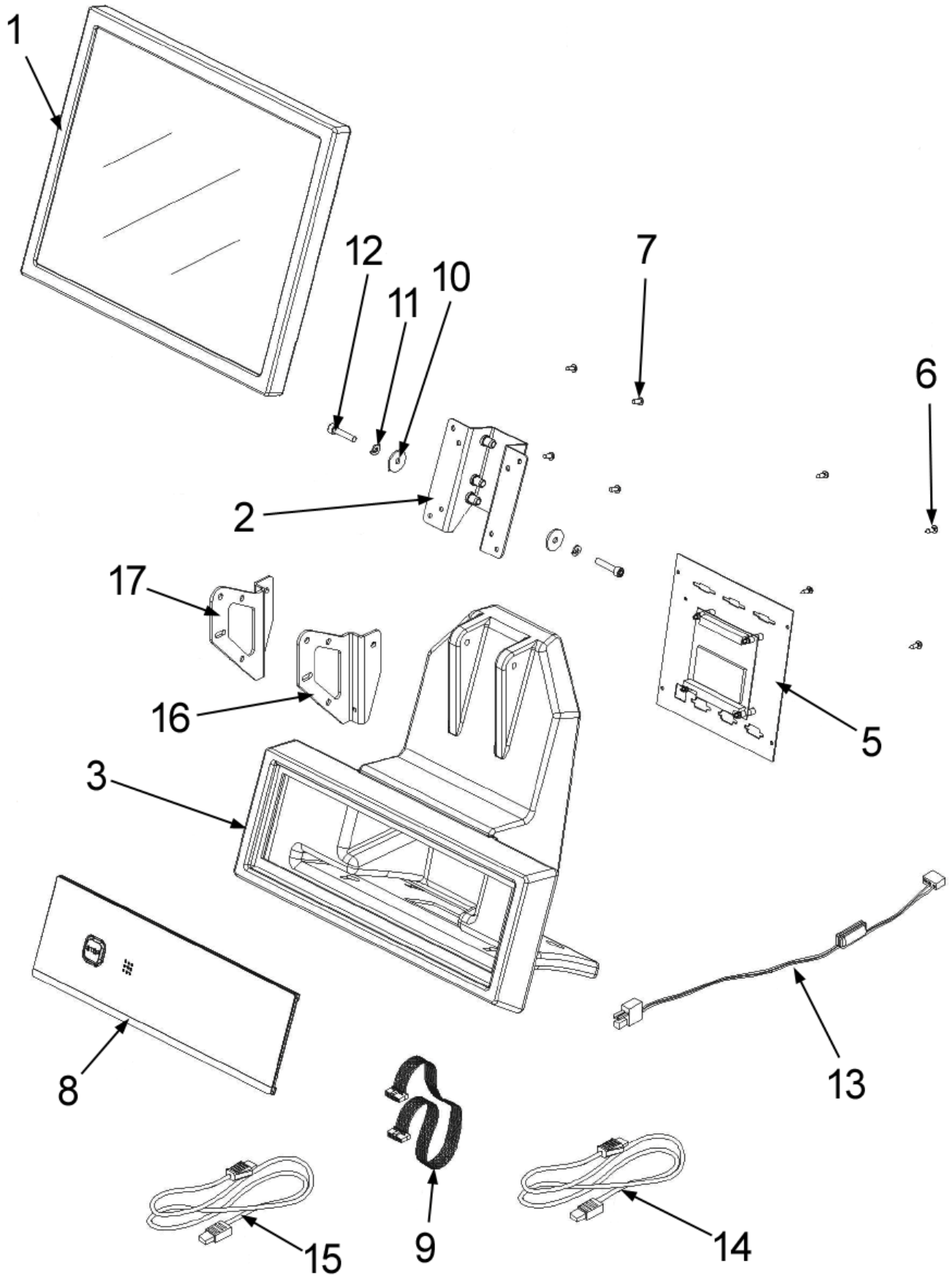
Ref	Qty	Part Number	Description
1	1	EAM0021D06A	Bolt - Standing
2	1	EAA0384G60AC	Internal protective plate
3	1	EAA0345G77A	Sheet of light module complete
4	1	5-07945A	Cable stop
5	1	EAS2134G92A	Internal camera support
6	2	6-10022A	UTP patch cable
7	1	EAA0277D86A	Wheelguard unit
8	1	EAC0099G47A	Measurement unit cover
9	3	1-31406A	Screw
10	1	EAA0358G03A	Laser pointer protection
11	1	EAA0358G04A	Laser pointer unit
12	1	EAL0395G08A	Protective Label
13	2	1-16409	Screw
14	2	1-01915A	Hexagonal spacer
15	1	EAL0442G76A	Product label Geodyna 9000p
17	3	EAC0060G00A	Vibratory System Covers
18	1	EAS2089G58AC	Lamp area cover plate
19	1	3-05209A	Switch ethernet 10/100
20	2	6-12222A	USB 2 A-mini B for inside scanner
21	1	EAW0276G25A	Laser pointer extension cable
22+	1	EAW0283G65A	Power cable camera epc assembly
23	1	EAW0276G24A	Stepper motor cable
24	1	EAW0240G86A	Stop cable
25	3	EAM0071G44A	Hexagonal spacer
26	1	EAS2134G93A	Protection for inner camera
30	1	EAW0283G63A	Ethernet switch power cable
31*	1	EAA0508G89A	Pedal Cover
*Only used with EAA0508G82B Pedal Assembly			
+Only used with EAA0364G91A Emdeded PC Assembly			



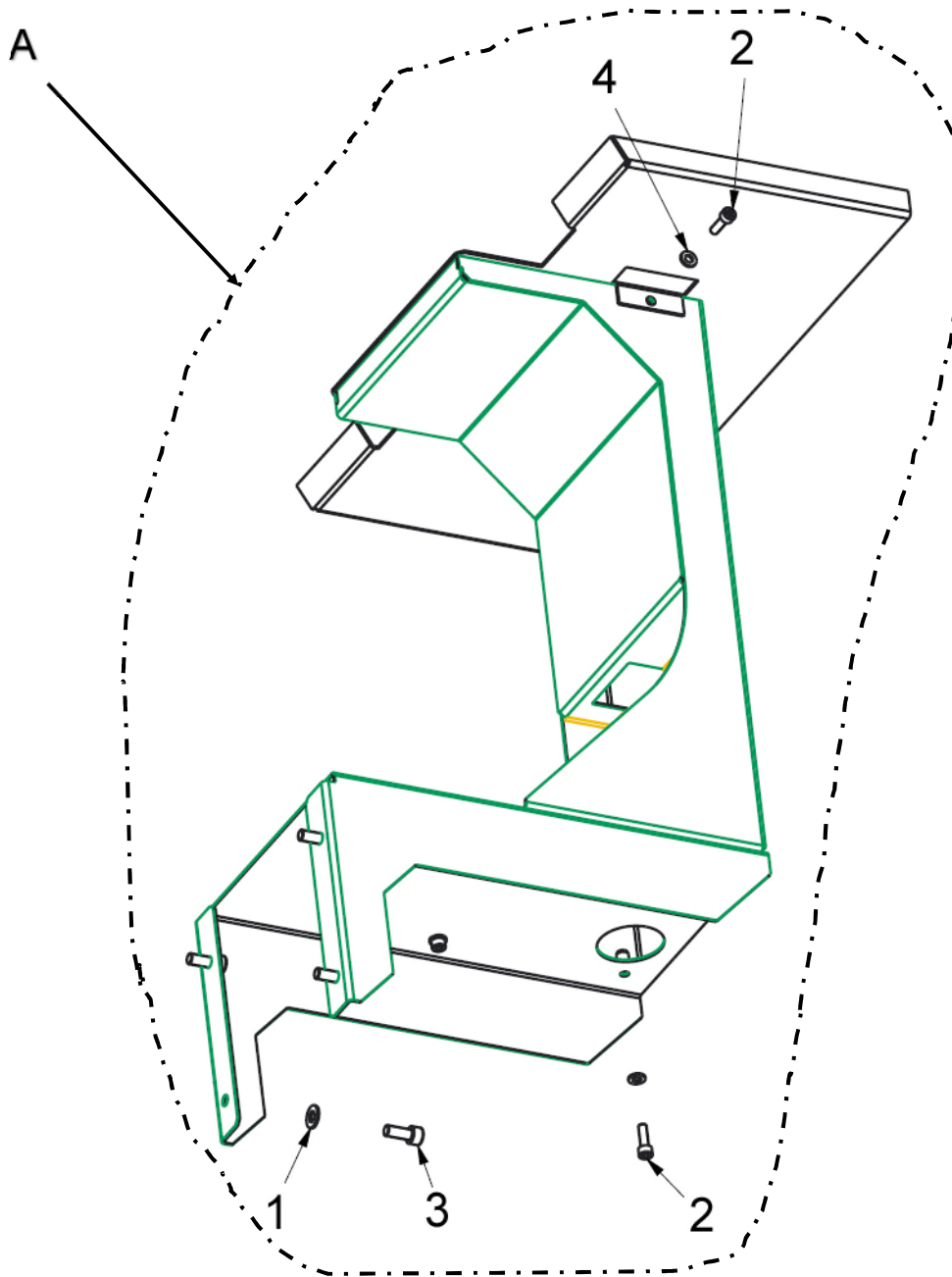
Ref	Qty	Part Number	Description
1	1	EAP0271G60C	Camera and hub USB board
2	1	2-92966A	12V Power Supply
3	12	1-22623A	Screw, Phil Pan H.Tapp
4	1	EAC0099G48A	Rear cover
5	1	EAM0091G45A	Weight tray
6	1	EAS2112G87A	Painted glass support
7	1	EAM0071G59A	Glass for rear camera
8	4	1-23159A	Nut
9	1	EAS2112G48AC	Display & wheelguard supp
10	1	EAS2112G23AC	Rear cover
11	1	EAA0313D24AC	Closure plate
12	3	6-11822A	Cable USB 2 A-mini B for all rear lasers
13	1	EAW0276G29A	Rear motor cable
14	1	EAW0276G22A	Short stop cable



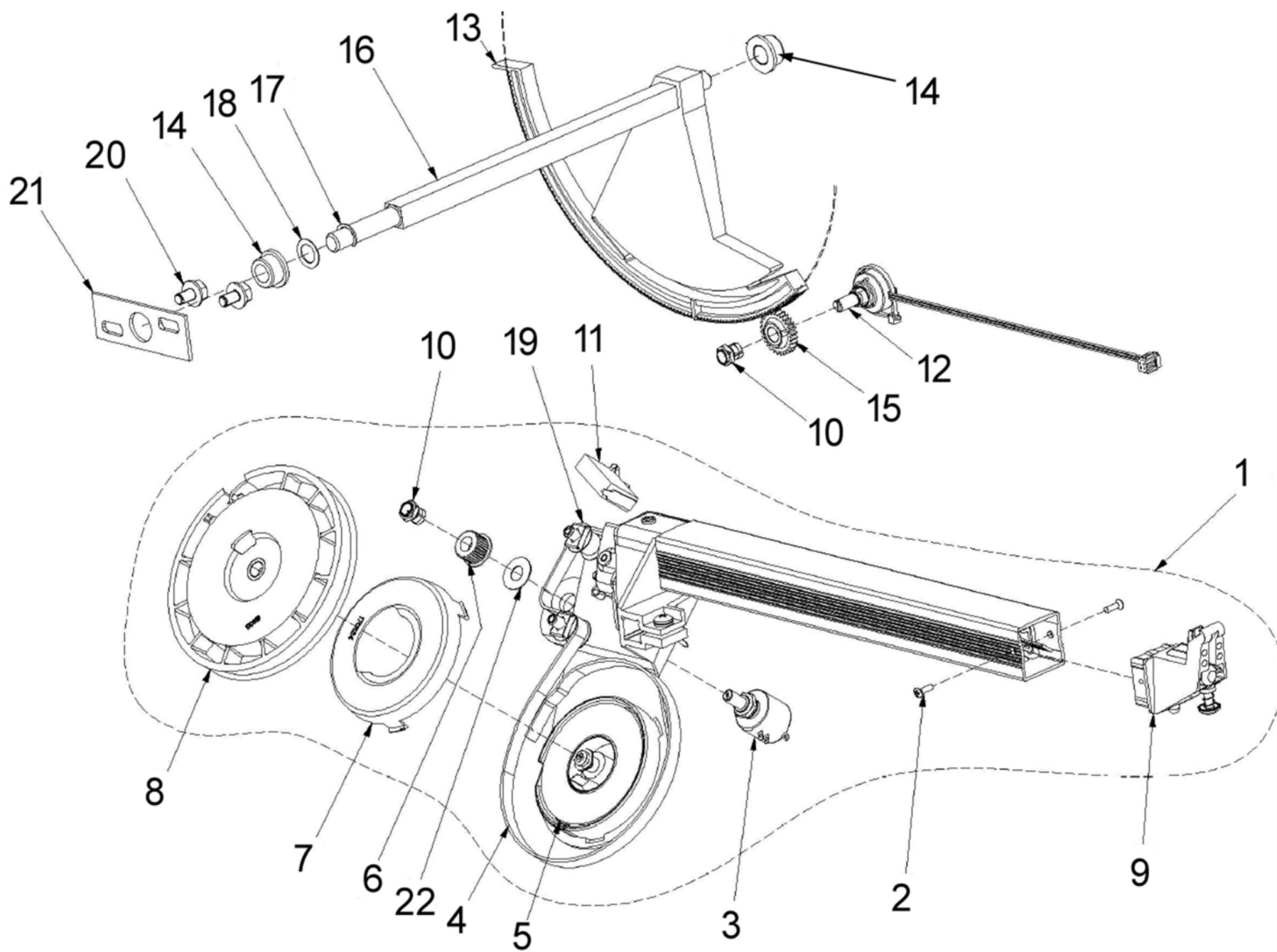
Ref	Qty	Part Number	Description
A	1	EAA0358G08A	Complete Wheelguard Support
1	1	EAA0313D99A	Wheelguard support
2	9	1-10041	Washer D.8
3	9	1-32401	Screw,Hex Head Machine M8 x 12
4	8	EAA0364G49A	Complete Unified roller
5	1	EAS2025D40A	Angular support
6	1	EAM0005D69A	Cone



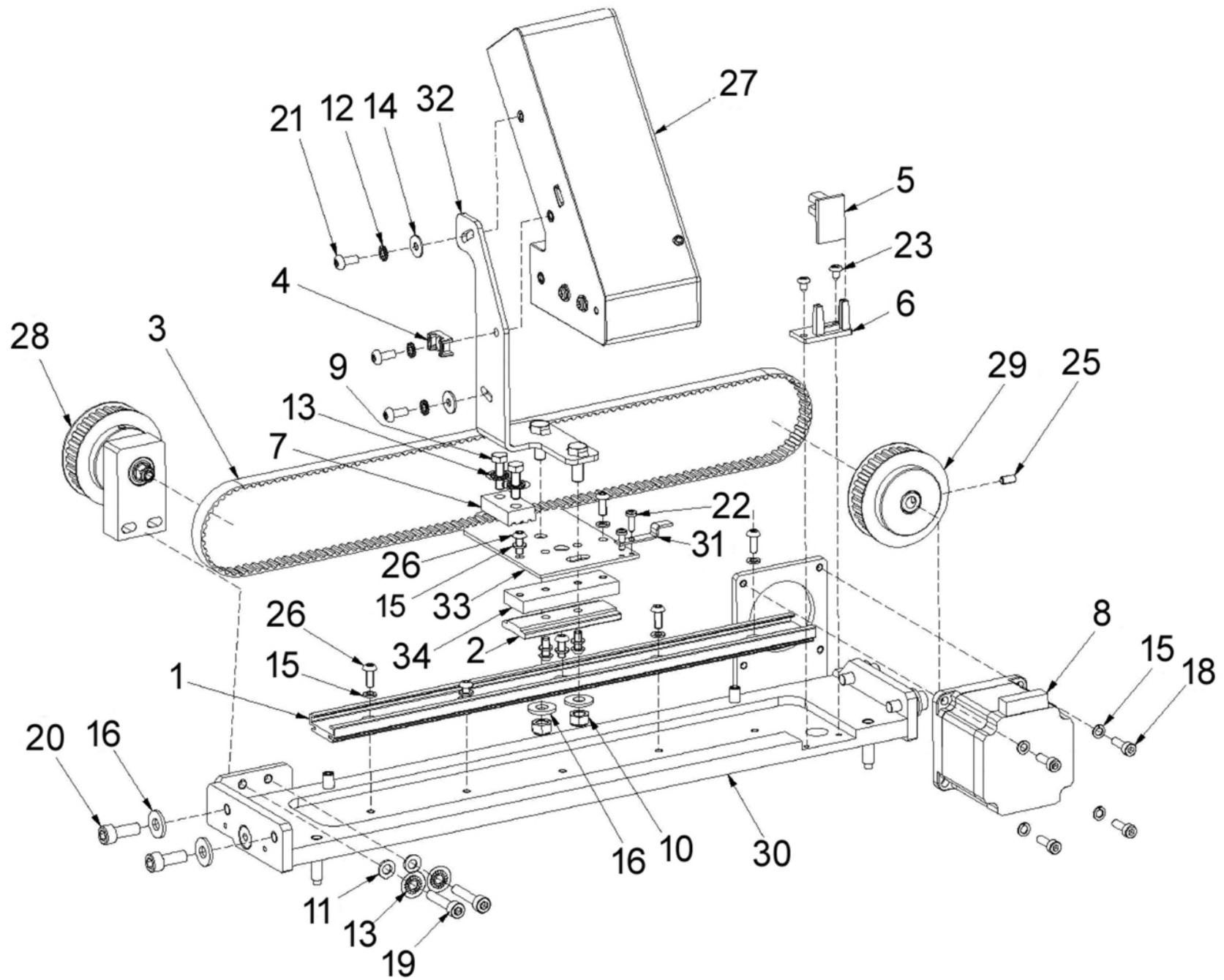
Ref	Qty	Part Number	Description
1	1	3-08108A	19" Wide LCD Monitor Touchscreen
2	1	EAS2113J55A	Vesa Coupling Unit
3	1	EAC0103G07A	Monitor And Keyboard Support
5	1	EAA0457G71A	Embedded PC
6	4	1-12926A	Self Tapping Screw
7	4	1-54310A	Screw
	4	1-13533A	Nut
8	1	EAA0378G83A	Keypad
9	1	EAW0240G10A	Ribbon cable for Keyboard
10	2	1-22941A	Washer
11	2	1-2746	Washer
12	2	1-16609A	Screw
13	1	EAW0282G65A	EPC power supply cable
14	1	6-09922A	FTP patch cable
15	1	6-08922A	Cable USB 2 A-B 1M for TouchScreen
16	1	EAS2128J46A	Touchscreen support right ext
17	1	EAS2128J45A	Touchscreen support left ext



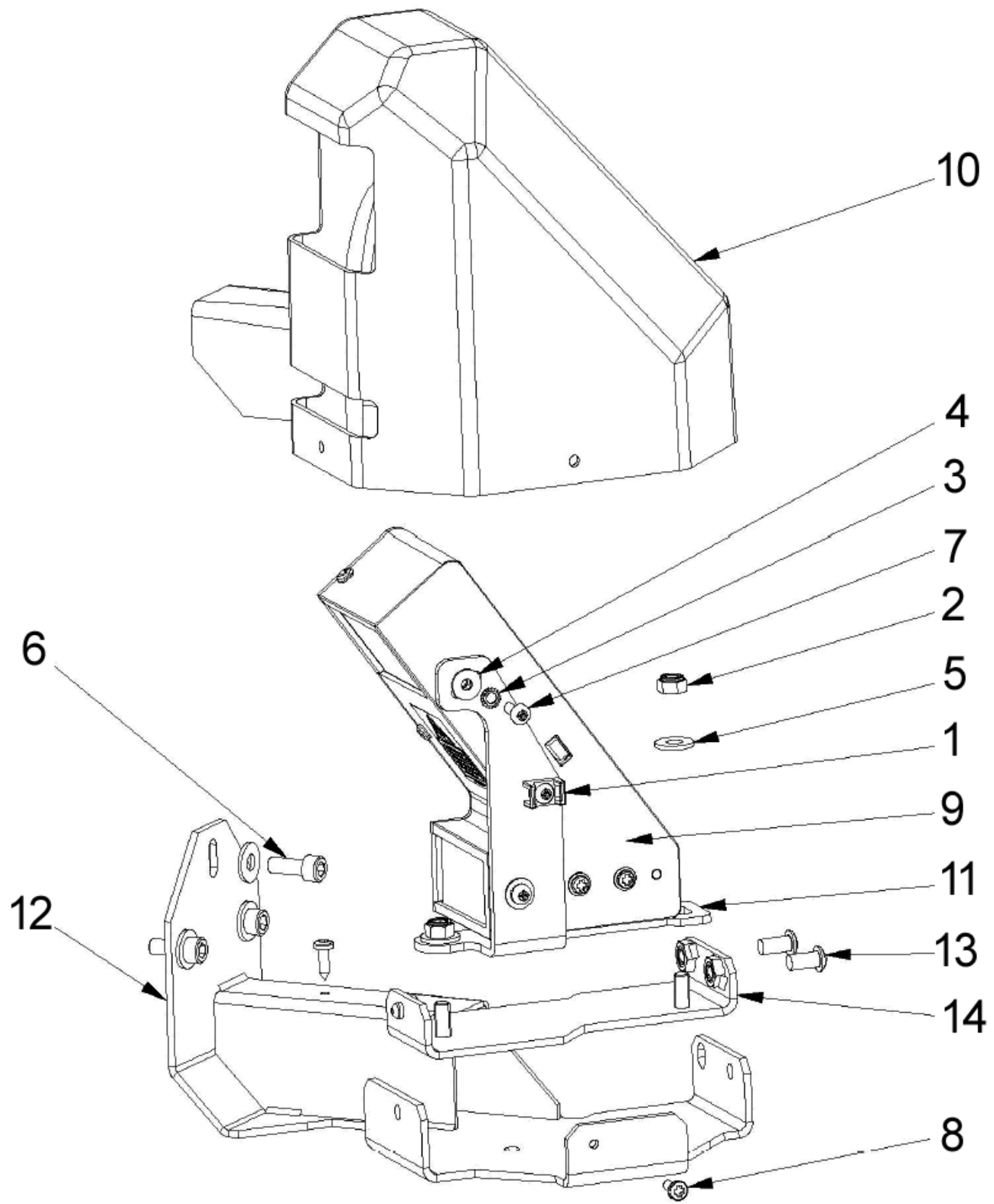
Ref	Qty	Part Number	Description
A	1	EAA0358G60AC	Assy Printer support
1	4	1-10041	Washer D8
2	6	1-16409	Screw
3	4	1-17709	Screw
4	6	1-9841	Washer D6



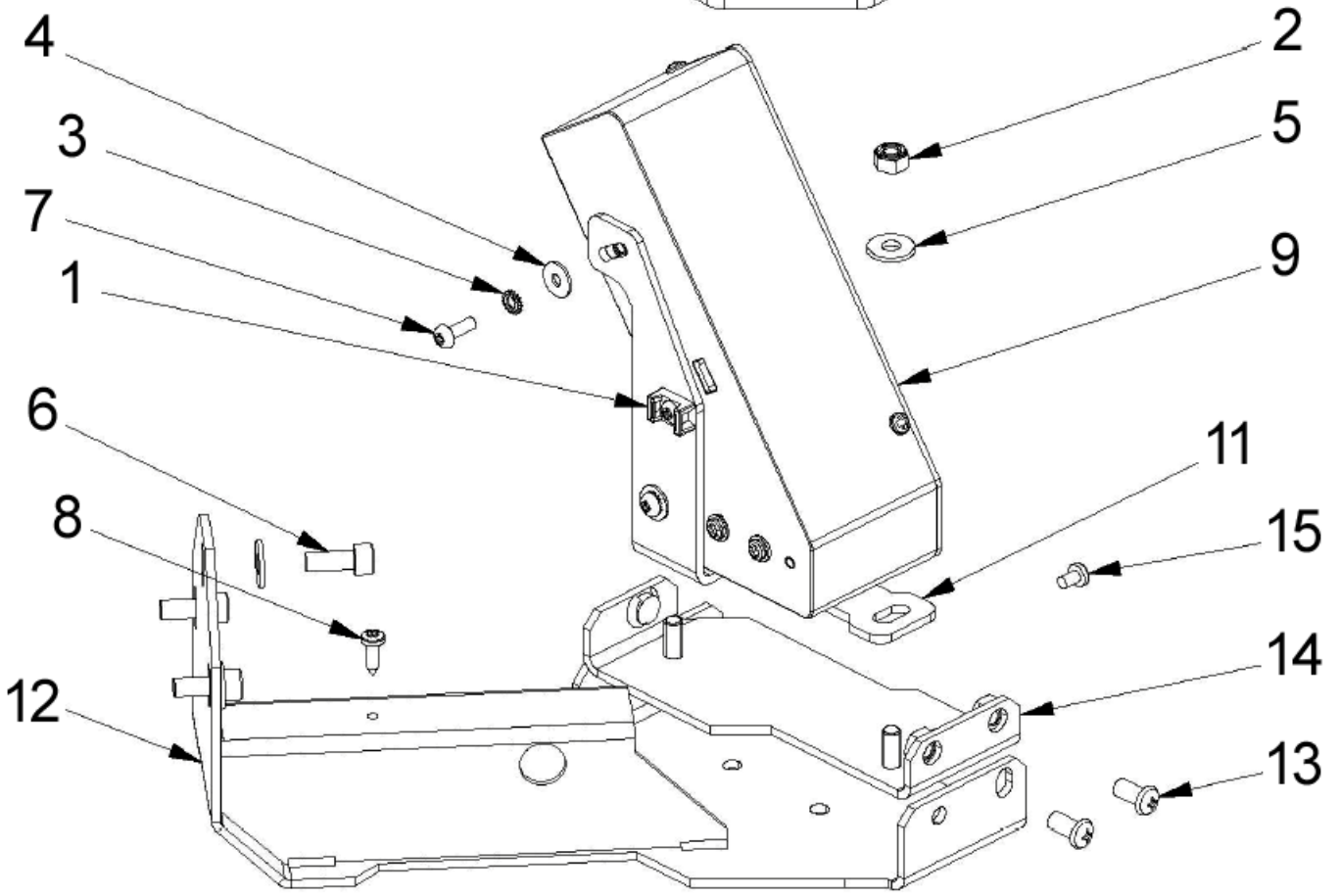
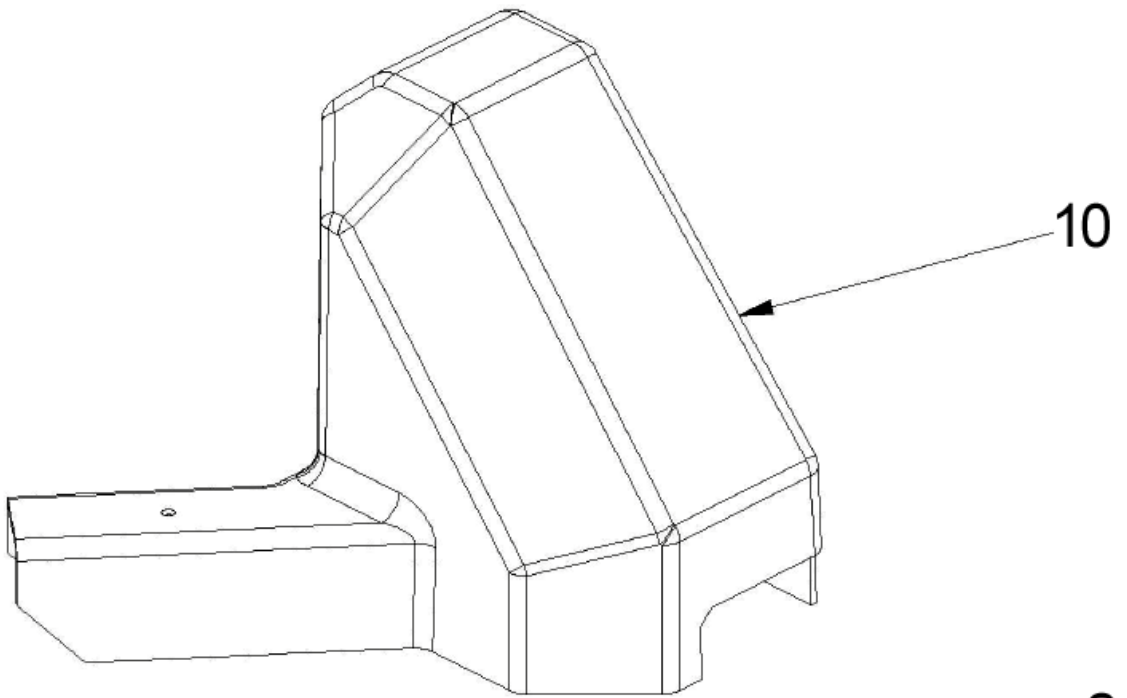
Ref	Qty	Part Number	Description
1	1	EAA0358G00A	Geodata 3 gauge unit
2	2	1-23123A	Self tapping screw
3	1	EAA0362G03A	Wired multiturn potentiometer
4	1	EAA0357G98A	Toothed belt
5	1	1-03967A	Spiral Spring
6	1	EAC0126G88A	Synchronous Pulley Z=32
7	1	EAC0058D58A	Safety cover
8	1	EAC0058D06A	Return pulley
9	1	EAA0357G97A	Geodata applicator unit
10	2	2-07657A	Clamping Device
11	1	2-09437A	Cutout Blade Relay
12	1	EAA0266D20A	Potentiometer unit with nut
13	1	EAC0103G97A	Tooth segment
14	2	1-06565A	Bushing
15	1	EAC0058D13A	Wheel Gear
16	1	EAM0055G61A	Geodata pin
17	1	1-19377A	Circlip
18	1	1-20641A	Shim adjustment washer
19	2	EAM0005D60A	Roller
20	2	1-07024A	Screw
21	1	EAS2058D01A	Positioning plate
22	1	EAM0179G73A	Washer



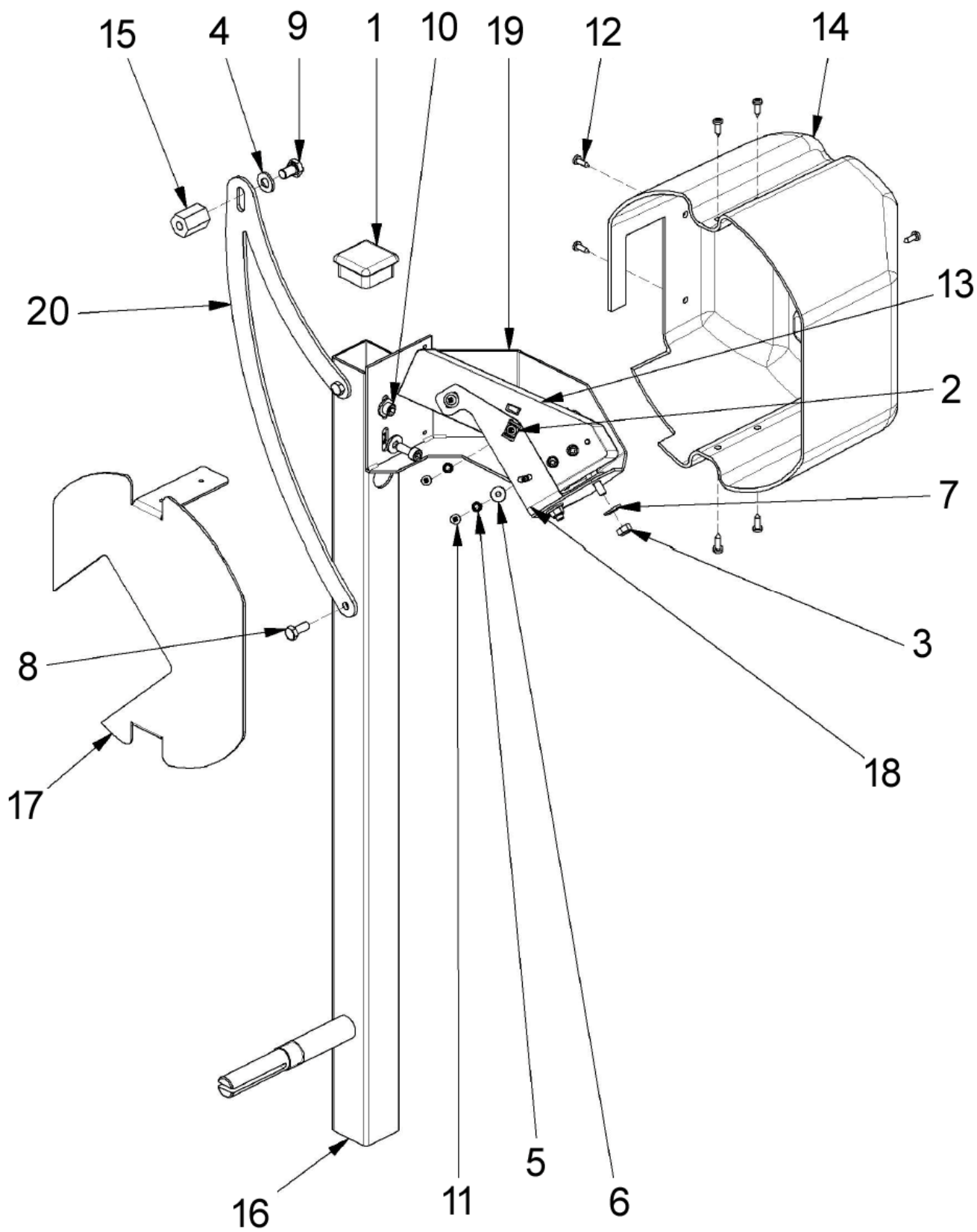
Ref	Qty	Part Number	Description
1	1	1-24484A	Guide IGUS
2	1	1-24584A	Slide IGUS
3	1	8-06631A	Toothed belt
4	1	5-07945A	Cable stop
5	1	EAP0167G10A	Opto switch board
6	1	EAC0087G03A	Board support
7	1	EAM0048G47A	Toothed plate
8	1	EAA0328G15A	Stepper motor with connector
9	2	1-46401A	Screw
10	2	1-9933	Nut, Prevailing Torque M6
11	2	1-9741	Washer D.5
12	3	1-1348	Washer - D.4
13	4	1-1448	Washer, Toothed D.5
14	2	1-16441	Washer Plain
15	13	1-2546A	Washer Spring Singlecoil
16	6	1-16641A	Washer Plain
18	4	1-52009A	Screw
19	2	1-15209	Screw
20	4	1-16309	Screw Hex Socket M6 x 16
21	3	1-13204A2	Screw
22	2	1-22723A	Self Tapping Screw
23	2	1-17023A	Self Tapping Screw
25	1	1-38910	Screw
26	9	1-68209A	Screw
27	1	EAA0345G77A	Sheet of light module complete
28	1	EAA0357G99A	Belt tightening assy
29	1	EAM0076G50A	Machined assy pulley
30	1	EAA0489G58A	Assy rear camera support
31	1	EAS2112G35A	Linear drive home position plate
32	1	EAS2112G50A	Complete intermediate support
33	1	EAS2112G51A	Complete rear camera support
34	1	EAM0085G43A	Spacer for camera support



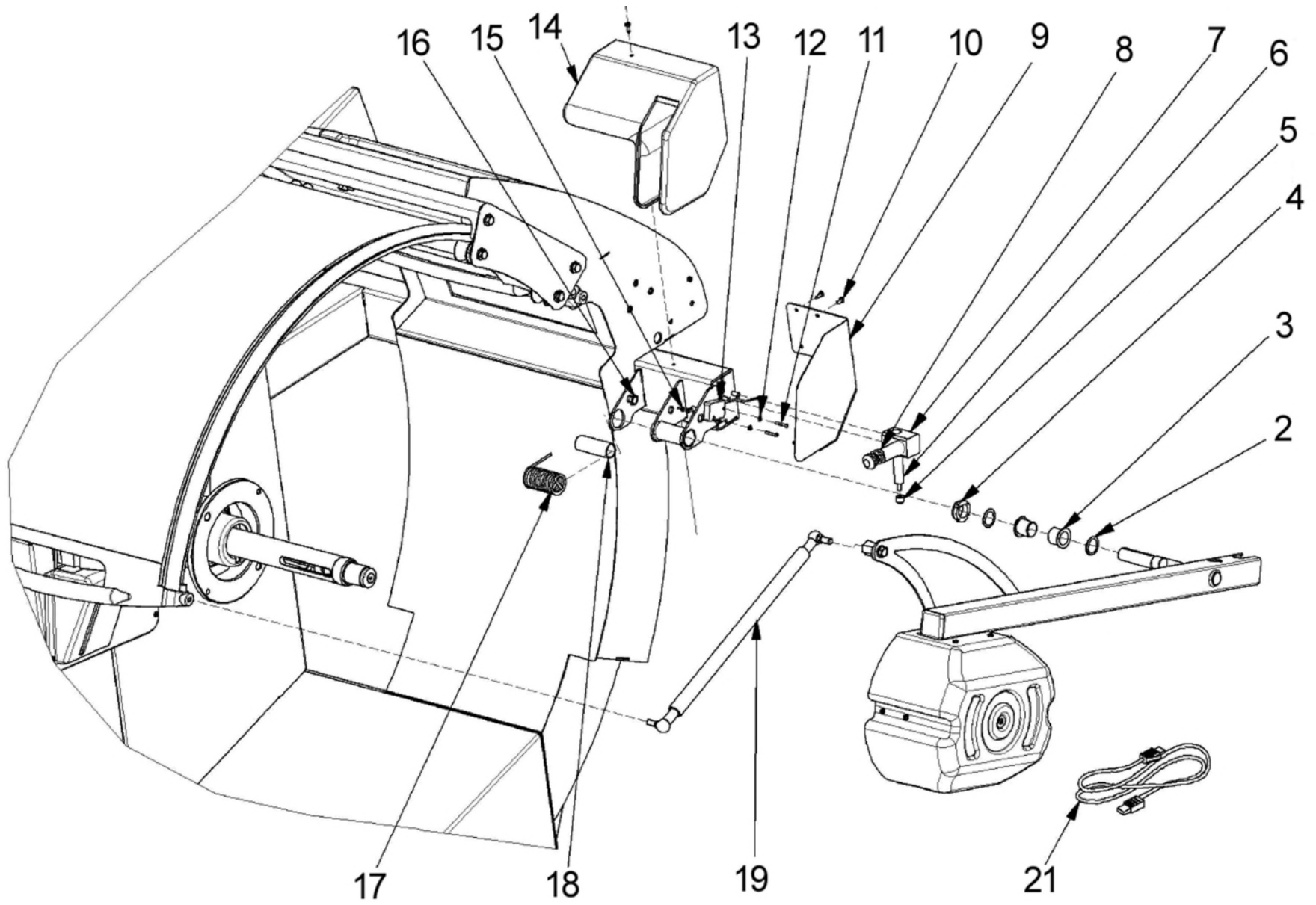
Ref	Qty	Part Number	Description
1	1	5-07945A	Cable stop
2	2	1-9933	Nut, Prevailing Torque M6
3	3	1-1348	Washer - D.4
4	2	1-16441	Washer Plain
5	5	1-16641	Washer Plain
6	3	1-16309	Screw Hex Socket M6 x 16
7	3	1-24606A	Screw
8	2	1-22623A	Screw
9	1	EAA0345G77A	Sheet of light module complete
10	1	EAC0099G67A	Cover for rear right camera
11	1	EAS2153G74A	Camera support
12	1	EAS2153G65A	Rear right camera support unit
13	2	1-15904A	Screw
14	1	EAS2153G73A	Camera adjustment plate



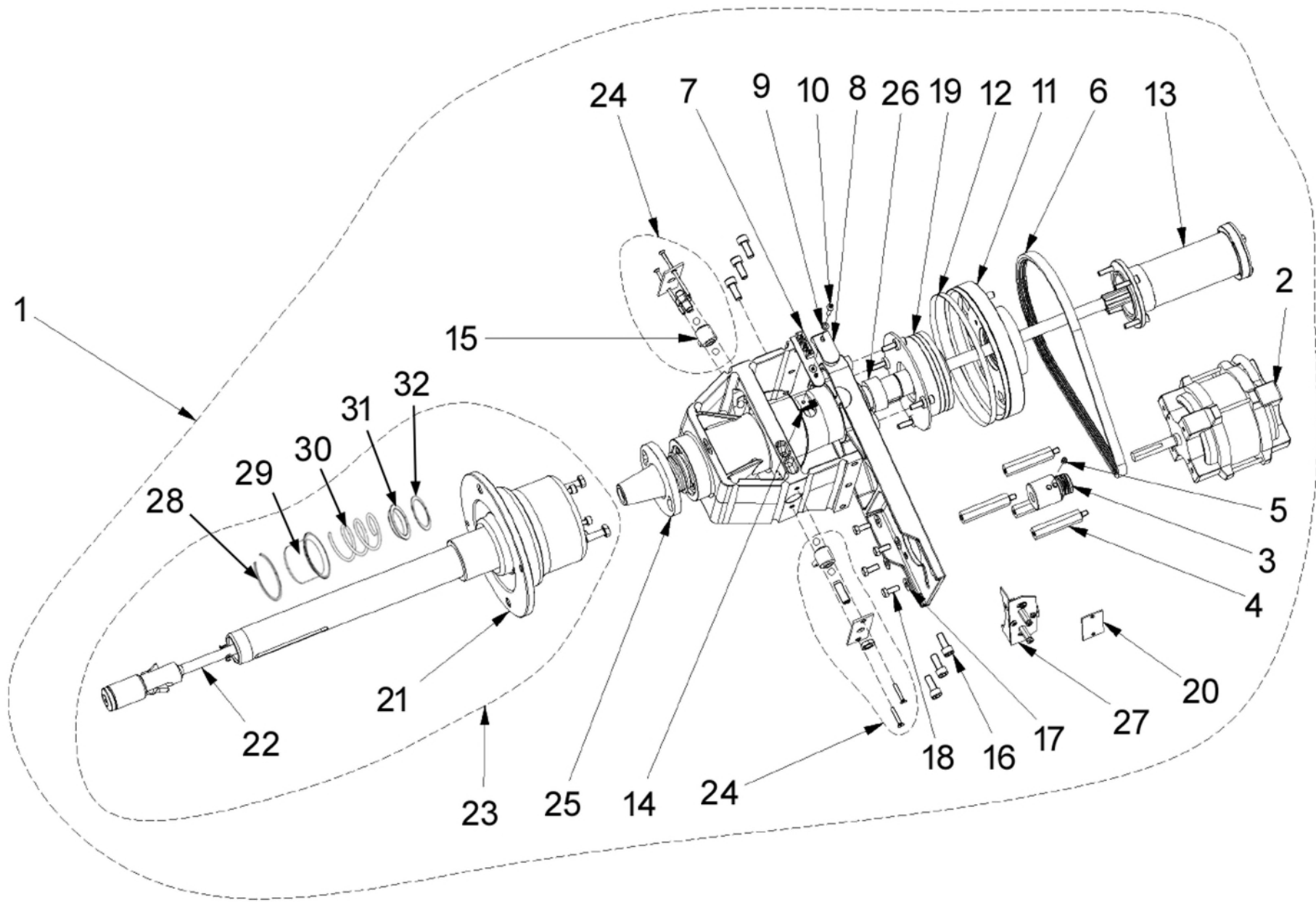
Ref	Qty	Part Number	Description
1	1	5-07945A	Cable stop
2	2	1-9933	Nut, Prevailing Torque M6
3	3	1-1348	Washer - D.4
4	2	1-16441	Washer Plain
5	5	1-16641	Washer Plain
6	3	1-16309	Screw Hex Socket M6 x 16
7	3	1-24606A	Screw
8	1	1-22623A	Screw
9	1	EAA0345G77A	Sheet of light module complete
10	1	EAC0100G27A	Cover for rear left camera
11	1	EAS2153G74A	Camera support
12	1	EAS2153G66A	Rear left camera support unit
13	2	1-15904A	Screw
14	1	EAS2153G73A	Camera adjustment plate
15	1	1-04025A	Self-Tapping Screw 3.9 x 6.5



Ref	Qty	Part Number	Description
1	1	8-11218A	Plug, Plastic
2	1	5-07945A	Cable Stop
3	2	1-9933	Nut, Prevailing Torque M6
4	1	1-10041	Washer D.8
5	3	1-1348	Washer - D.4
6	2	1-16441	Washer Plain
7	5	1-16641	Washer Plain
8	1	1-46701	Hex Head Screw
9	1	1-32401A	Screw,Hex Head Machine M8 x 12
10	3	1-16309	Screw Hex Socket M6 x 16
11	3	1-24606A	Screw
12	7	1-22623A	Screw
13	1	EAA0345G77A	Sheet of light module complete
14	1	EAC0099G51A	External scanner protection
15	1	EAM0075G18A	Protection external tube spacer
16	1	EAS2112G19A	Welded arm
17	1	EAS2112G29AC	Scanner protective plate
18	1	EAS2112G50A	Complete intermediate support
19	1	EAS2116G03A	external camera support unit
20	1	EAS2120G00AC	Return arm attachment

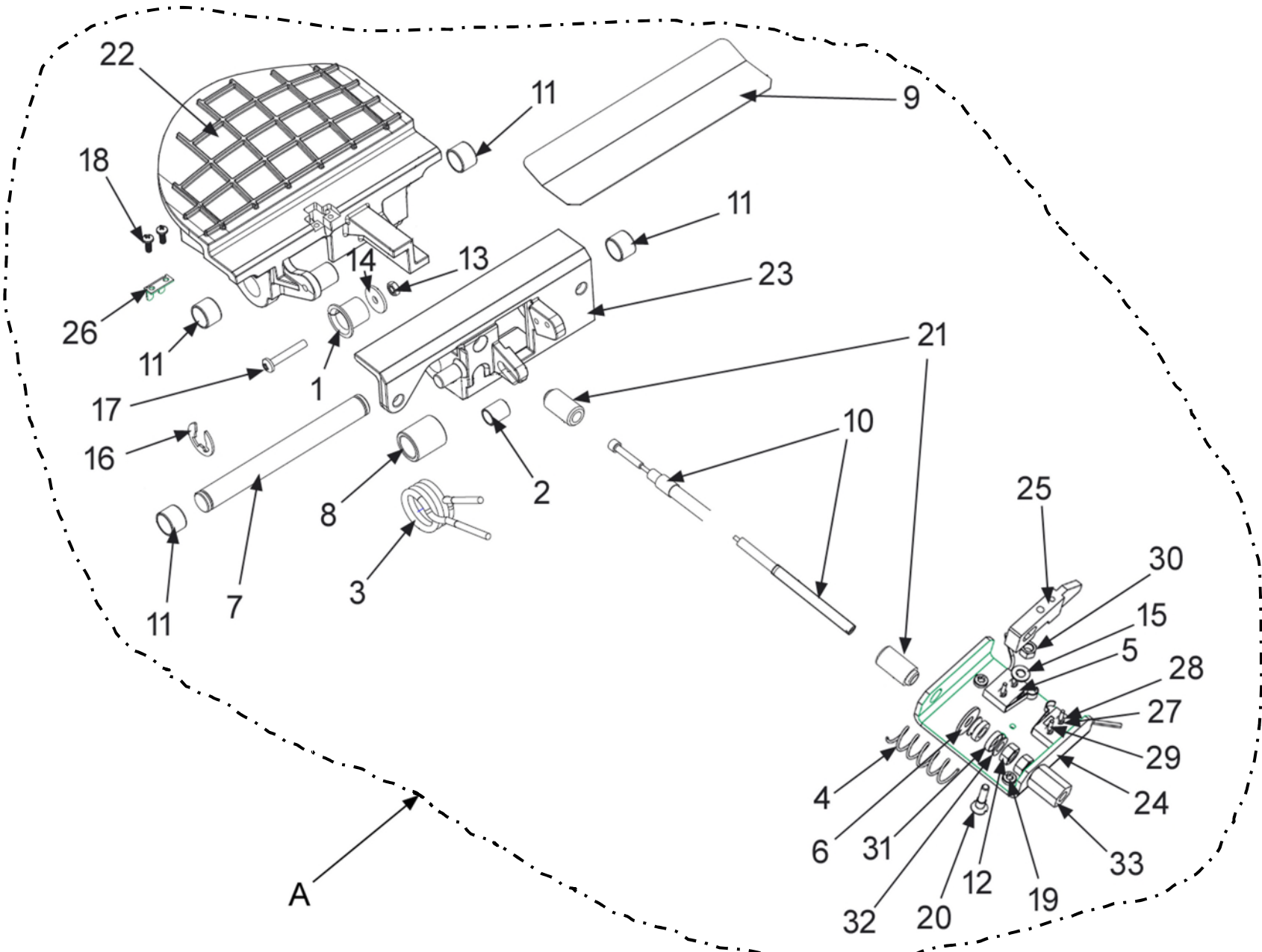


Ref	Qty	Part Number	Description
2	2	1-28141A	Shim adjustment
3	2	1-08365A	Flanged Bushing
4	1	1-02138A	Ring Nut,Metal- Self Lock
5	1	1-06669A	Plastic Cap
6	1	1-06569A	Shock Absorber
7	1	EAM0071G50AC	Shock absorbers support
8	1	EAA0377G32A	Shock absorber
9	1	EAS2112G33AC	Arm cover
10	4	1-22623A	Screw
11	2	1-27001	Screw
12	4	1-9541	Washer Plain D3
13	1	2-11961A	Wheelguard switch
14	1	EAC0099G46A	External camera arm cover
15	2	1-01537A	Nut
16	1	1-32501A	Screw, Hexagon Cap 8 x 16 8.8
17	1	EAM0071G46A	Torsion spring
18	1	EAM0075G19A	Guide tube
19	1	EAA0358G07A	Return rod unit
21	1	6-12022A	Cable USB 2 A-miniB



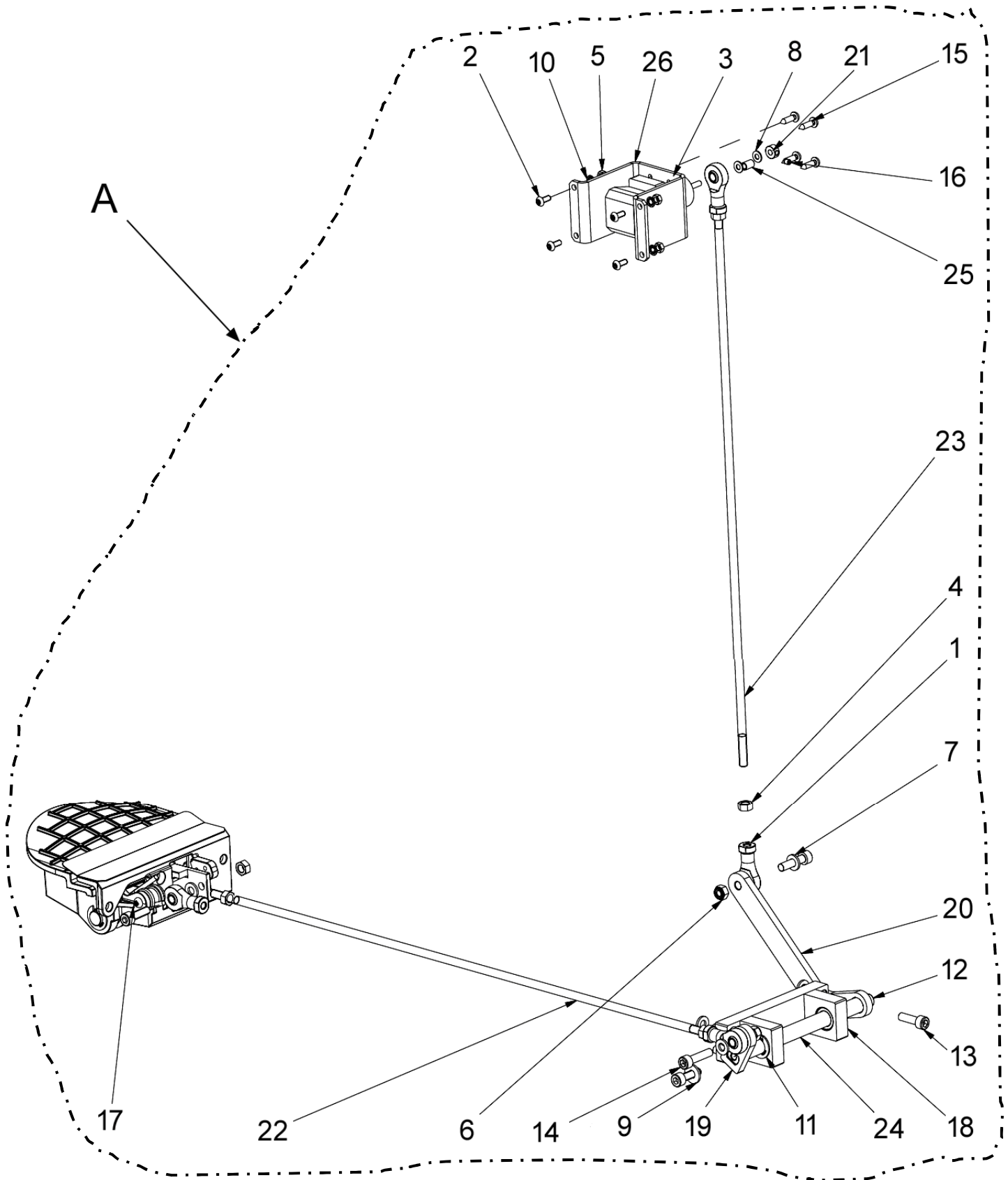
Ref	Qty	Part Number	Description
1	1	EAA0392G39A	Complete Vibratory
2	1	2-59366A	Motor w\Connector
3	1	EAM0005D08A	Motor Pulley
4	4	EAM0061G82A	Unit Motor Spacer
5	1	1-28410	Screw
6	1	8-3531	Belt
7	1	EAA0344G00A	Opto-Electronic Unit
8	1	EAC0094G11A	Encoder Board Protection
9	1	1-9641	Washer
10	1	1-35006A	Screw
11	1	EAM0021D18A	Motor Pulley
12	1	EAM0005D64A	Encoder Bar Code
13	1	EAA0307G36A	Replacement Kit "P"
14	1	EAW0240G67A	Cable Without Temp. Sensor
15	2	EAA0260D59A	Transducer
16	6	1-17709	Screw Tcei 8 x 20 8G
17	4	1-16641A	Washer Plain
18	4	1-46701A	Hex Head Screw
19	1	EAA0307G35A	Brake Disc Repair Kit
20	1	EAP0201D20A	Encoder Board Complete
21	1	EAA0382G01A	Power Clamp Flange L
22	1	EAA0382G02A	Pull-Shaft Complete L
23	1	EAA0384G71A	P-Clamp Flange Complete
24	1	EAA0328G16A	Transducer Fixing Unit
25	1	EAA0307G37A	Bayonet Fitting
26	1	EAM0051G25A	Power Clamp Spacer Ring
27	1	EAK0329G15A	Board Support Kit
28	1	1-13077	Circlip
29	1	EAS2025D14A	spring Guide
30	1	1-07768A	Compression spring
31	1	EAC0058D14A	Spring centering ring
32	1	1-18241A	Washer

Power Clamp Pedal Assembly used up 7/2022 (771GRxxx)

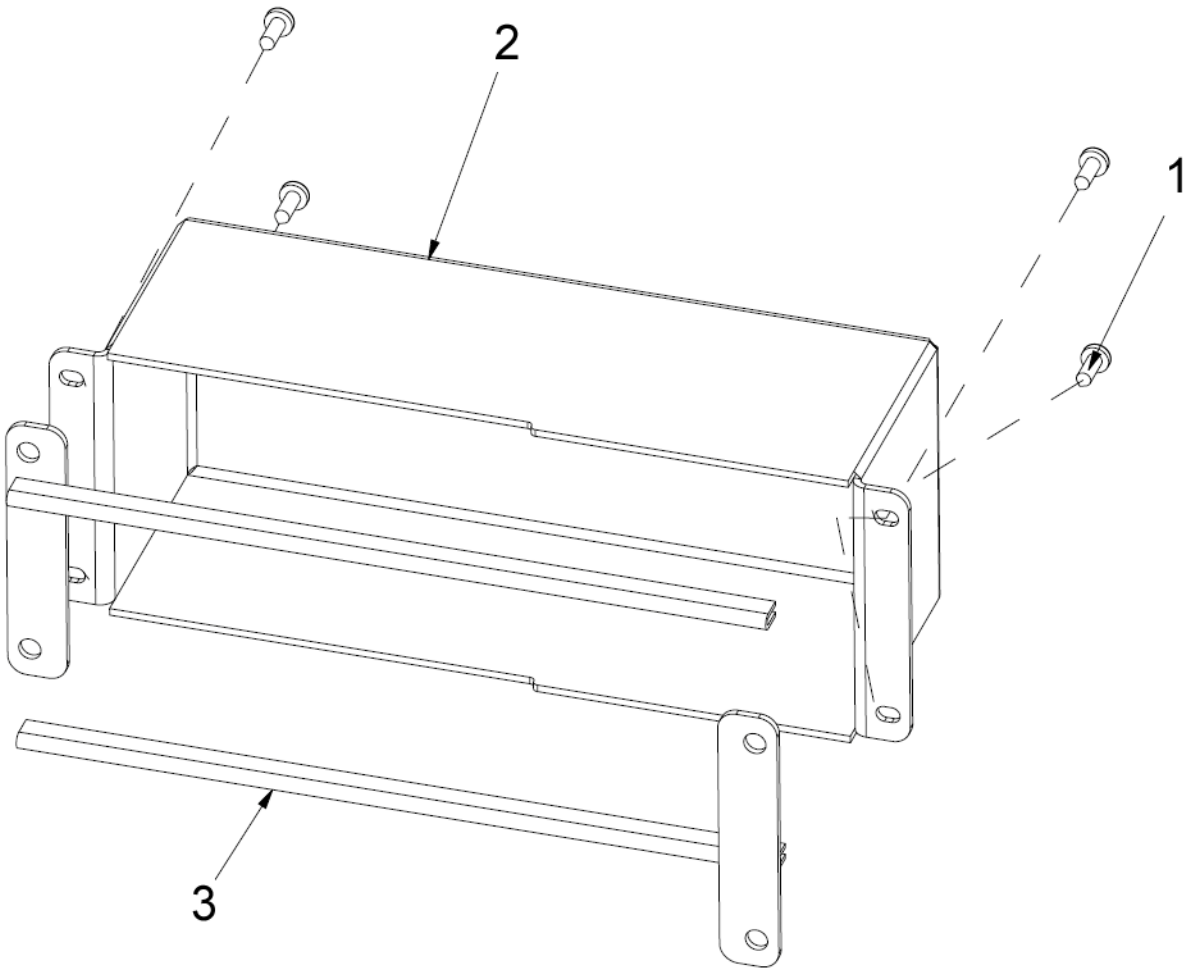


Ref	Qty	Part Number	Description
A	1	EAA0409G98AC	ALU Brake Pedal 2 Switch UL
1	1	EAM0181G49A	Double Shoulder Bushing 12 x 14 x 15
2	1	EAM0181G04A	Spacer With Flange 8.4
3	1	EAM0048G78A	Spring, Pedal Switch
4	1	1-12068A	Compression Spring 1.5 x 13.5 x 45
5	2	2-07661A	Micro Switch with Wires
6	1	1-20041A	Washer - Flat 18mm x 6.5mm x 1.5mm
7	1	EAM0046G39A	Pedal Pin
8	1	EAM0051G96A	Bushing Cent Spring
9	1	EAL0443G72A	Adhesive Pedal
10	1	EAA0344G15A	Cable for Brake Pedal
11	4	1-10165A	Self Bushing PAP1210-P10
12	2	1-11633	Nut M6 x 5.2mm Thk Blk
13	1	1-11433	Nut-M4
14	1	1-22741A	Washer, Plain
15	1	1-36741A	Shim Ring 5 x 10 x 1
16	2	1-18477A	Retaining Ring 10 x 1.2mm
17	1	1-26506A	Screw-Phms M4 x .7mm x 25mm
18	2	1-20504A	Screw - PHM M3 x 8mm
19	2	1-22623A	Self-Tapping Screw TCB
20	1	EAM0153G23A	Pin for Actuator
21	2	EAM0103G42A	Spacer For Brake Cable
22	1	EAM0122G48A	Pedal Machined UL
23	1	EAM0181G72A	Brake Pedal Support Finished
24	1	EAS2128J78A	Microswitch Support
25	1	EAM0153G24A	Actuator
26	1	EAS2128J75A	Cable Stop
27	4	1-1048	Washer-External Shakeproof D2
28	4	1-11033	Nut - Hex, M2
29	4	1-36606A	Screw -M2x 16mm, Pn Head PH Zinc
30	1	1-11533A	Hex Nut M5
31	2	1-36641A	Washer Spherical M6 D
32	2	1-36141A	Washer Spherical M6 C
33	1	EAM0140G21A	Bushing Threaded

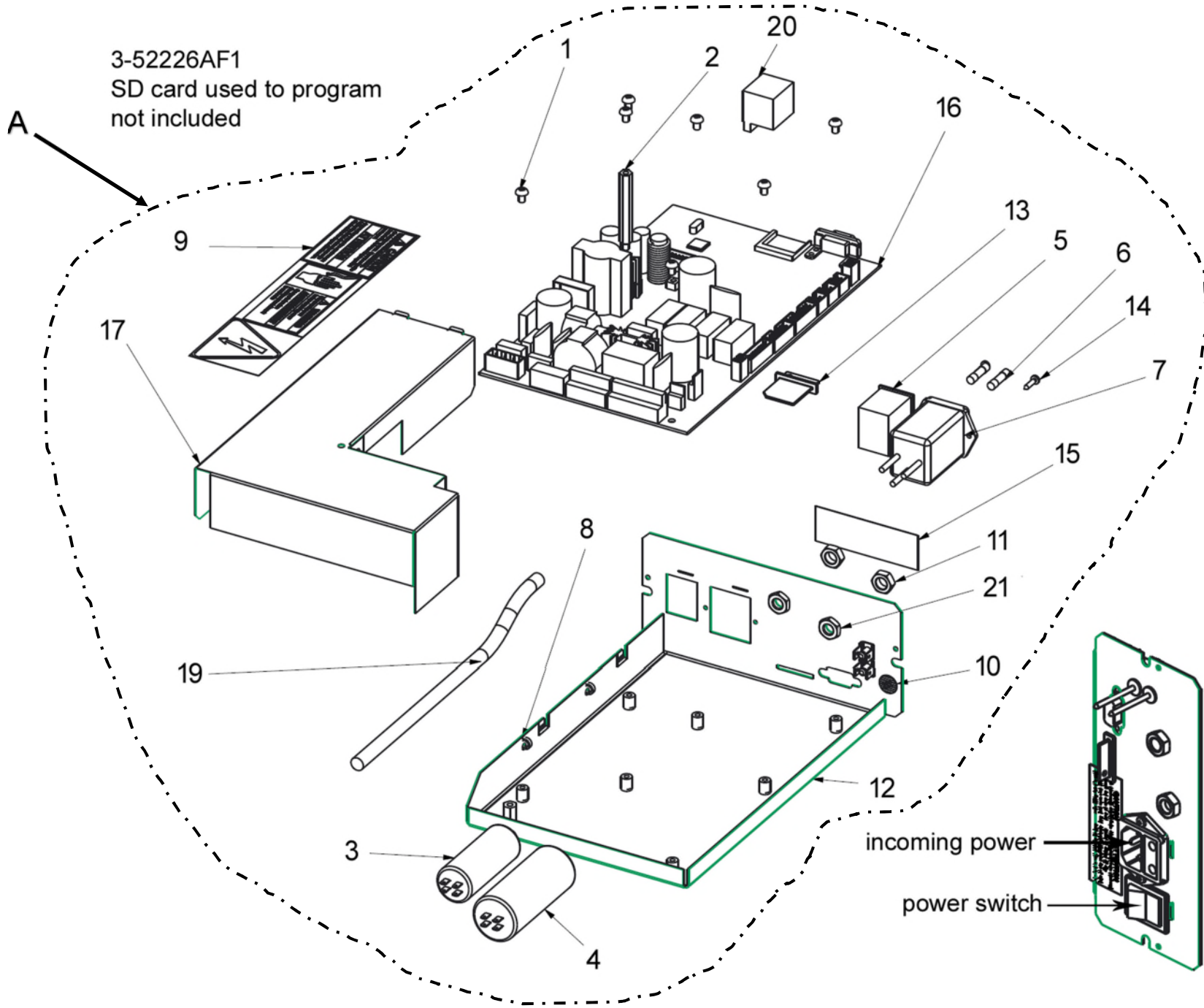
Power Clamp Pedal Assembly from 10/2022 (771KRxxx)



Ref	Qty	Part Number	Description
A	1	EAA0508G82B	Complete Brake pedal assembly
1	4	1-11963A	Rod End Self Lubricating
2	4	1-68209A	Screw M4 x 10
3	1	2-13658A	Joystick, 2 Positions, 48mm Shaft
4	5	1-11633A	Nut-Hex. M6 6S
5	4	1-11433A	Nut, Hex M4
6	2	1-9933	Nut, Prevailing Torque M6
7	9	1-9841	Washer, Plain D6
8	2	1-9641	Plain Washer D4mm
9	2	1-16641	Washer Plain D6mm
10	4	1-05747A	Lockwasher - Internal Tooth - D.4
11	2	1-18477A	Retaining Ring 10 x 1.2mm Thk
12	3	1-16409	Screw - Hex Socket Head Cap
13	4	1-16409A	Screw, Hex Socked Head M6 x 20
14	2	1-16509A1	Screw, Hex Socket Head M6 x 25
15	4	1-18023A	Screw, Selfthread. 8P x 16 Tcb
16	1	1-38610	Screw M4 x 4 Set Cup Zn
17	1	EAA0503G89A	Alu Brake Pedal UI Version
18	1	EAA0508G83B	Shaft Support Assy L Cabinet
19	1	EAM0179G23B	Small Linkage Plate
20	1	EAM0179G25B	Big Linkage Plate
21	1	EAM0180G228	Joystick Connection
22	1	EAM0181G01B	Pulling Bar Low L Cabinet
23	1	EAM01B1G02B	Pulling Bar Upper L Cabinet
24	1	EAM0181G03A	Bearing Shaft L Cabinet
25	1	EAM0181G82A	Joystick Bushing
26	1	EAS2229G22A	Joystick Support

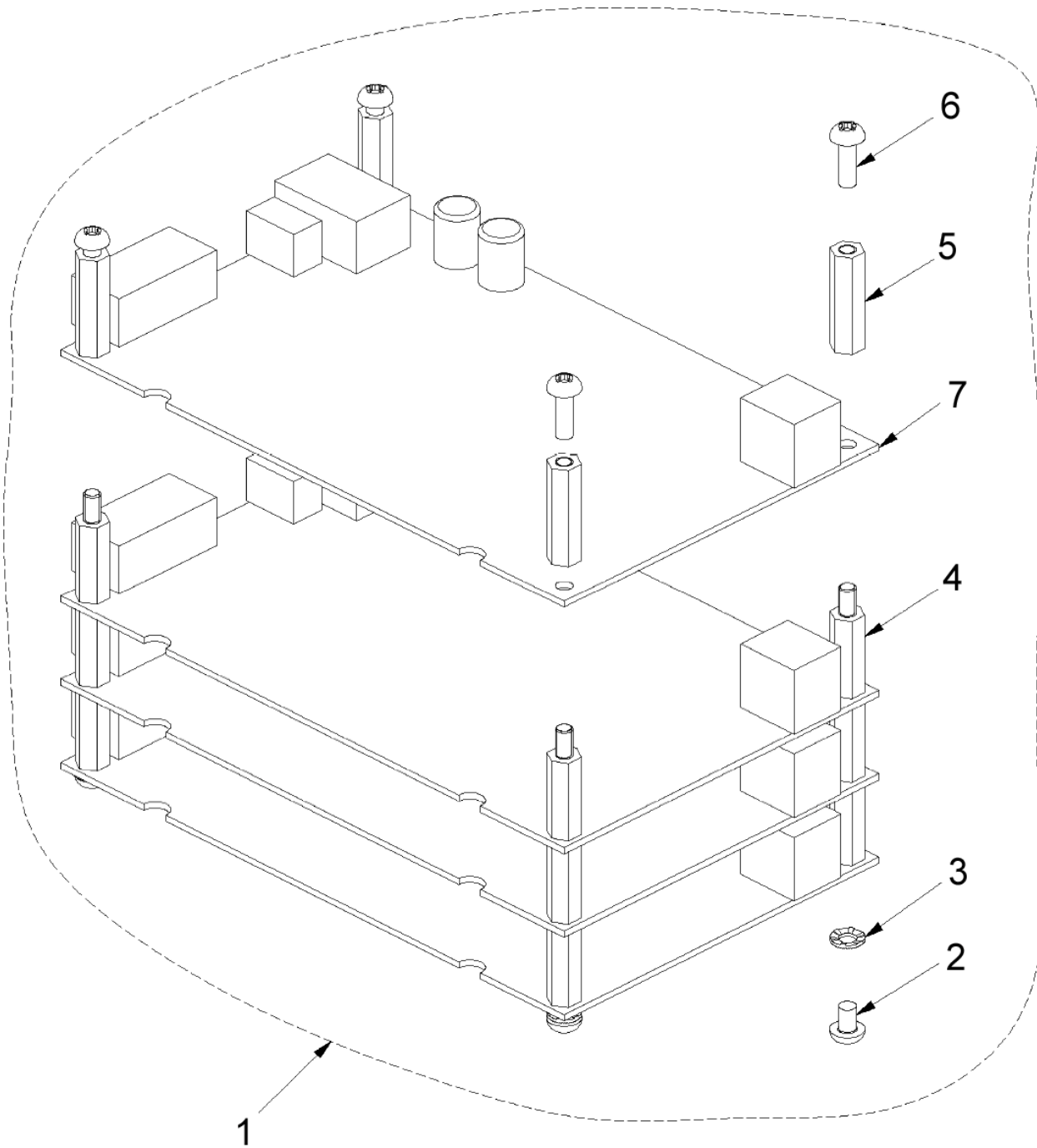


Ref	Qty	Part Number	Description
1	4	1-22623A	Self-Tapping Screw
2	1	EAA0508G91A	Cover
3	2	EAM0181G15A	Rubber Gasket
4	2	EAM0202G86A	Self-Adhesive Sealing



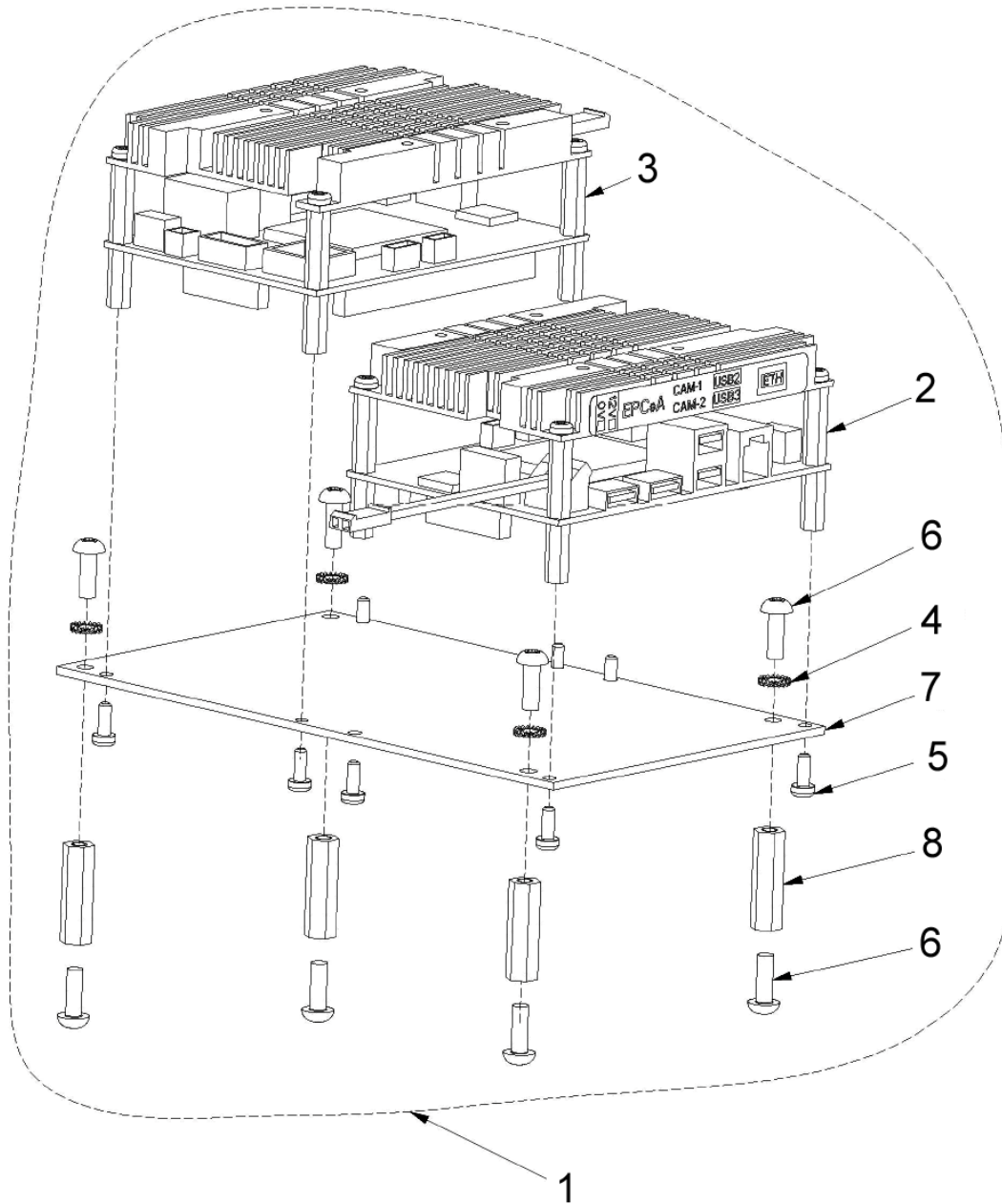
Ref	Qty	Part Number	Description
A	1	EAA0338G83B	Complete Electronic Box
1	7	1-13606A	Screw, M4 x 6mm W/ Lockwasher
2	1	1-14461A	Spacer M4 x 50
3	1	2-01429A	Capacitor - 10Uf, 400V
4	1	2-01529A	Capacitor - 20Uf, 400V
5	1	2-13258A	Main Switch
6	2	2-21251A	Fuse-Time Delay, 250V, 6.3 Amp
7	1	2-64948A	Entry Power Module
8	3	5-845	Cable Tie Plastic
9	1	EAL0341J98A	Label-Balancer Warnings, Ebox
10	1	8-23762A	Label - Earth Symbol
11	2	1-15933A	Nut - Hex, M8 x 1.25 Din 936
12	1	EAA0346J 15A	Frame Assy - IBP Bal Box
13	1	EAC0087G52A	Memory Card
14	2	1-23223A	Screw-Phms,M2.9 x 1 x 13mm
15	1	EAL0349G44A	Fuses Caution
16	1	EAP0276G40A	Motorized Integrated
17	1	EAS2092G08A	12 Cover For New Dig. Box
18	1	EAW0239D07A	Cable - Grounding
19	1	EAW0240G79A	Main Cord
20	1	2-17947A	Socket-Multipole. Wago
21	2	1-23333A	M8 Jam Nut

Camera EPC Unit used up to 2/2021 (771BQxxx)

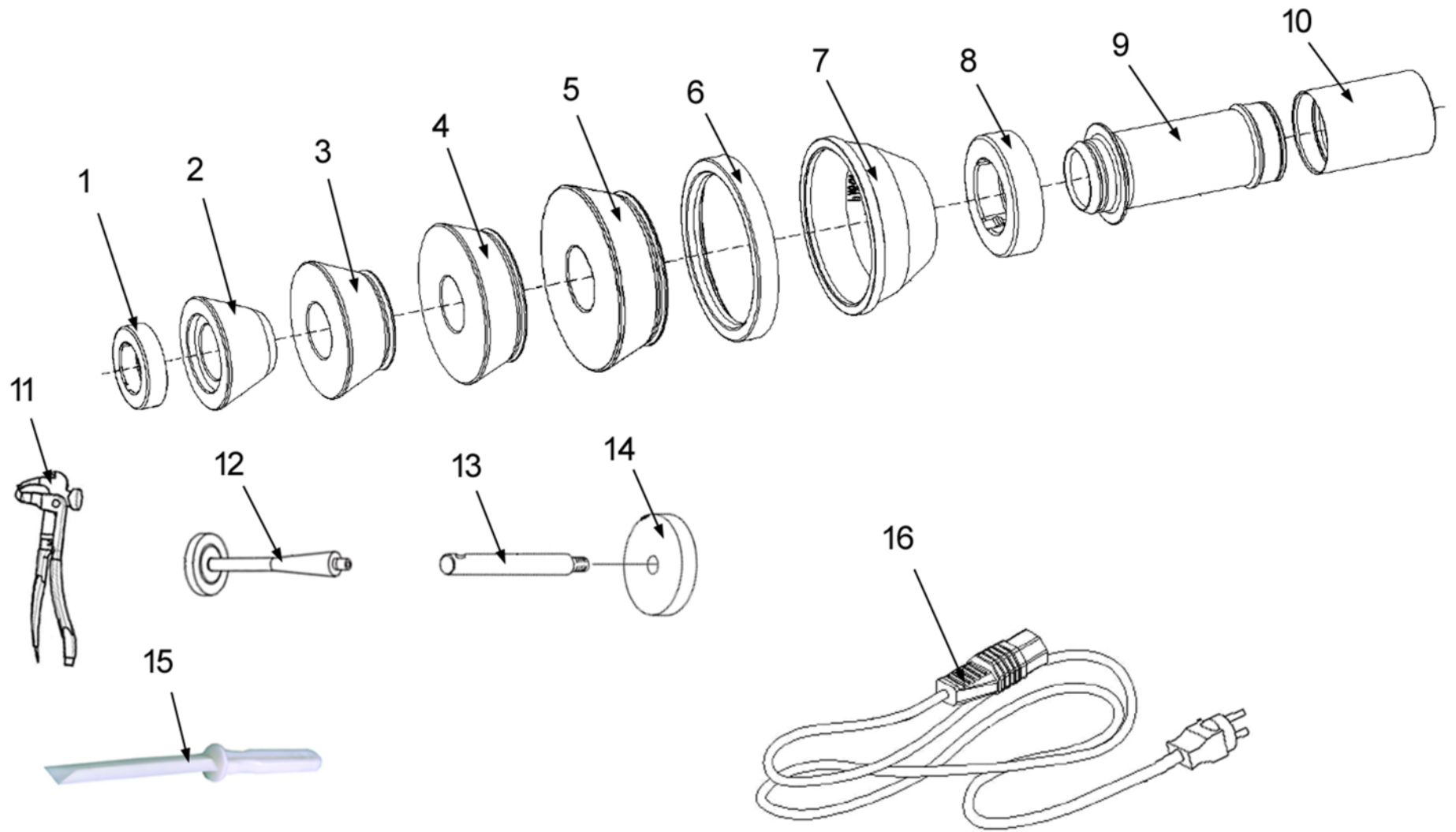


Ref	Qty	Part Number	Description
1	1	EAA0364G91A	Camera EPC unit
2	4	1-19804	Screw, Phil Pan head M4 x 6
3	4	1-5547	Washer
4	12	1-02915A	Hexagonal Spacer
5	4	1-19561A	Hexagonal Spacer
6	4	1-24606A	Screw
7	4	3-05109A	Embedded PC Alix 3D2

Camera EPC Unit from 3/2021 (771CQxxx)



Ref	Qty	Part Number	Description
1	1	EAA0502G26A	Camera EPC Unit
2	2	EAA0502G37A	EPC #A Programmed
3	2	EAA0502G38A	EPC #B Programmed
4	4	1-1348	Washer - D.4
5	8	1-20504A	Screw Tcb -Cross 3 x 7
6	8	1-24606A	Screw
7	1	EAS2219G92A	Sheet-Metal EPC Support
8	4	1-19561A	Hexagonal Spacer



Ref	Qty	Part No	Description
1	1	EAC0058D08A	Pressure Ring
2	1	EAM0005D23A	Cone 1.65" - 3.03"
3	1	EAM0005D24A	Cone 2.83" - 3.9"
4	1	EAM0005D25A	Cone 3.78" - 4.57"
5	1	EAM0003J69A	Cone 3.42" - 5.25"
6	1	EAC0058D15A	Rubber Protection Ring
7	1	EAC0058D07A	Pressure Cup
8	1	EAC0058D08A	Pressure Ring
9	1	EAM0086G86A	Clamping Sleeve P-Version L
10	1	EAC0058D69A	Protection Sleeve Long
11	1	00058839000	Pliers, Wheel Weights
12	1	EAM0005D40A	Calibration Weight
13	4	EAM0006G01A	Hook
14	4	EAC0060G02A	Flanges Guard
15	1	EEHT300A	Tool
16	1	EAX0039J01A	Cord-Power 230V
NS	1	00089209000	Cord-Power Adapter 12



Notice: The information contained in this document is subject to change without notice. Hofmann makes no warranty with regard to this material. Hofmann shall not be liable for errors contained herein or for incidental consequential damages in connection with furnishings, performance, or use of this material.

309 Exchange Ave
Conway, AR 72032
501-450-1500

Geodyna 9000p Spare Parts List - EEWB771AP230

TEEWB771AP2303_TS

DSS

04/2024